









Precisan WeightTransfer

Siirrä painolukema Precisa-vaa'astasi suoraan sovellusohjelmaasi

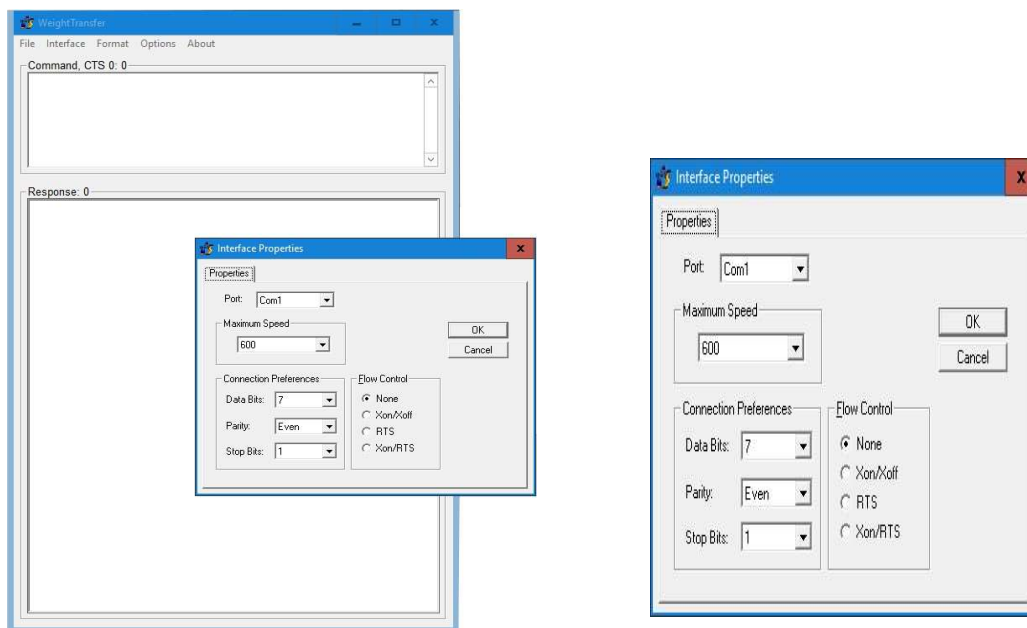
Lataa WeightTransfer ohjelma Precisan kotisivulta <https://www.precisa.com/support> kohdasta Tools & Drivers

Tools, Drivers, ...

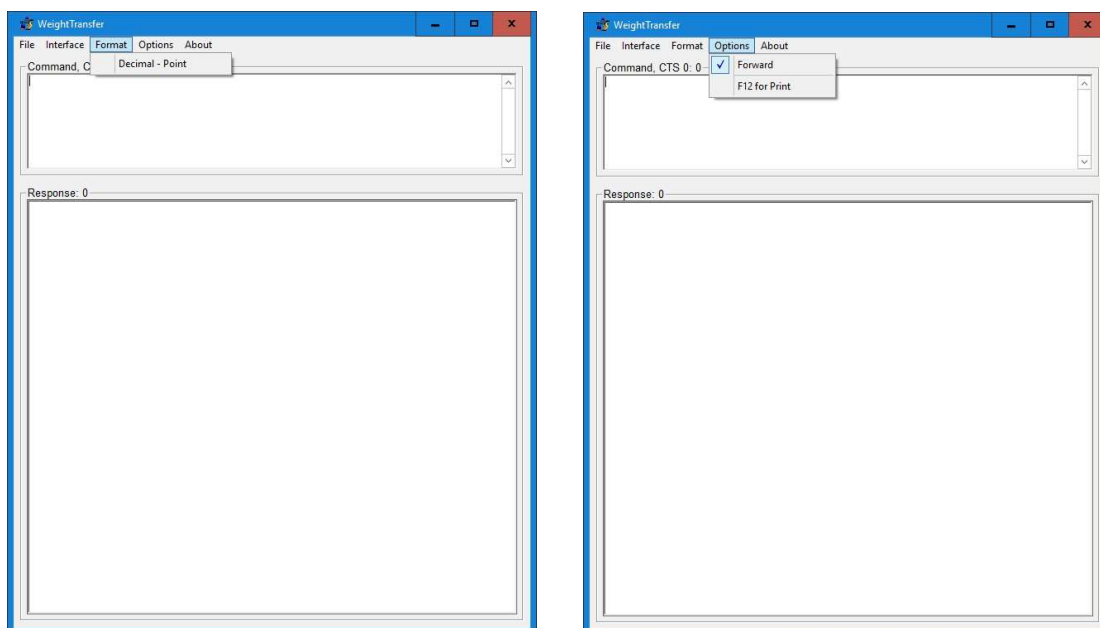
Tools, Drivers, ...	Notes	Brochure	Manual	Quickstart	Software/File
Universal Download-Tool:					
USB Driver for Windows:					
prepDATA, PC Software for prepASH 340 Series:					
Channelizer for IP (Ethernet) and COM (RS232):					
WeightTransfer, Interface to Windows:					

Asenna ohjelma ... seuraa asentamisen kuluessa asennusohjeita.

Aseta WeightTransferin Interface-asetukset samoiksi kuin ne ovat Precisa-vaa'assasi.



Valitse desimaalipilkku vai desimaalipiste.



Aktivoi tiedon siirto suoraan sovellukseen kursorin paikalle.

Valitse **Forward** jolloin lukema siirtyy automaattisesti sovellusohjelmaan kursorin kohdalle. Kopio tulostusarvosta jää aina Response-osioon.